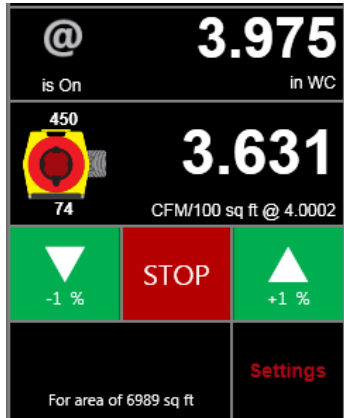


# 20 lb Commercial Duct Tester is the game changer

Retrotec's Commercial DucTester and DM32-20 smart gauge make it effortless to test ducts to any industry standard. Don't let its small size fool you, this duct tester creates 20 inches of water. It will test 7,000 square feet of commercial ductwork or more.



The DM32 smart gauge is the brains of this unit. Its touchscreen and intuitive setup provide the results you need. All the math is done right in the gauge. A true revolution.

Eliminate guess-work and hours of training... using our Quick Guide, your first test will take a few minutes to run.

## Fast automatic documentation



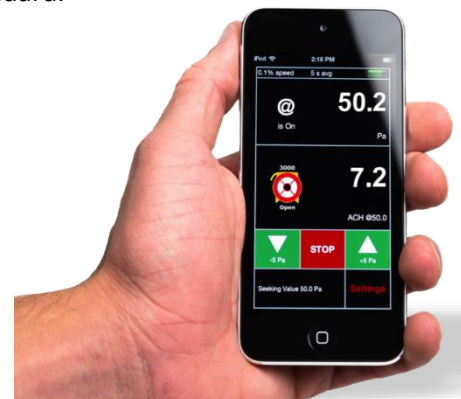
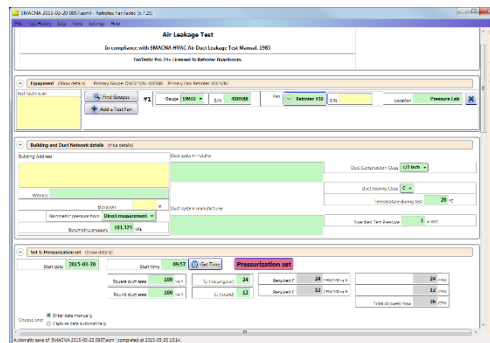
Light, simple, portable and accurate.

This system not only provides fully automated tests- it also creates custom reports with your logo in any format.

The gauge provides CFM or CFM per 100 square feet at the exact specified test pressure.

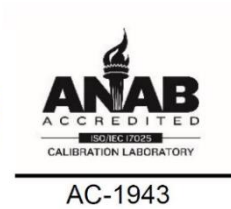
Turn the system on and off from your iPhone or Android Device with the WiFi option.

Automated software will run the test, automatically capture the data and provide custom reports for any industry standard.



# Features

- **Pressure Gauge** –calibrated in Retrotec’s ISO 17025 accredited lab. The Model DM32-20 gauge supplied with the Model 441 and 451 has an accuracy better than 1% of reading, NOT of full scale which is much less accurate.
- **Flow Measurement** - System calibration performed in an ANSI/AMCA chamber in 1% increments over a range of test pressures.
- **Calibration** All pressure and flow measurements are NIST traceable and include a calibration certificate. ISO 17025 Accredited Certificates are available.
- **Portable** - One technician can grab the entire system in its custom case in one hand, run up stairs or onto a scissor jack to complete a test.
- **Easy to Learn** - The Quick Guide’s easy to follow checklist will step you through your first test in minutes. Detailed procedure for all duct testing standards are supplied in the manual.
- **Saves Time** - The gauge saves your previous settings and auto zeroes. Orifice plates can be changed in seconds. These two features will save you hours on every job.



*“We are changing the currently used 1950’s style technology for something truly ground breaking in commercial duct testing.”  
Colin Genge 2015*

**Colin Genge** (Retrotec’s CEO) - since 1980 we have been manufacturing measurement systems for some of the most advanced facilities in the world from the Space Shuttle to nuclear power plants. Genge’s vision of “pushing the industry” is evident from the developing the first truly light weight duct tester and digital smart gauges. His latest creation, the Model 400 has been 3+ years in development, is intended to go beyond a “gauge and an orifice plate” and give you a system that has been designed from the ground up to be simpler, faster and better.

Contact Retrotec: Toll-free 1 (855) 738-7683 or email at: [sales@retrotec.com](mailto:sales@retrotec.com) to purchase or rent a Model 450 Commercial Duct Tester. Software and firmware can be updated for FREE online.

# Model 441/451 Commercial DucTester

Smallest but most powerful  
 .... 295 CFM at 8 inches Water Column (in WC)

Measure commercial duct leakage in either direction with the first truly light weight (16 lb) handheld commercial duct tester. Combine the 1700 Watt blower with the industry's first touch screen digital gauge for instant results to any testing Standard. Reduce testing time with Quick Change Orifice plates that test down to 7 CFM are included.



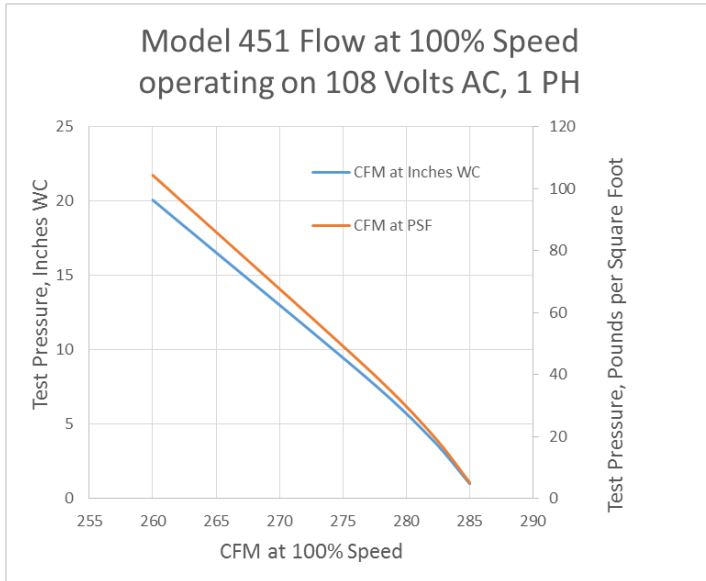
Power – choose one of:	120 V AC, 15.5 amps, 50/60 Hz, 1 phase, or 240 V AC, 8.5 amps, 50/60 Hz, 1 phase
Retrotec DM32-20 Digital Touch Screen Pressure Gauge	<ul style="list-style-type: none"> <li>• Calibrated +/- 8 inches Water Column, maximum +/- 20 in WC.</li> <li>• Resolution 0.0001 in WC</li> <li>• <b>Accuracy is 1.0 % of reading</b> or 0.002 in WC whichever greater</li> </ul>
Flow Range, <b>CFM</b>	<b>306</b> at 1 inch, <b>295</b> at 8 inches, 1400 CFM with extrapolation mode according to SMACNA formula. Minimum: <b>7</b> (0.31 Optional).
Flow Accuracy	+/- 5% against NIST traceable standard. ISO 17025 optional.
Test direction	Pressurization. Optional Depressurization Adapter is a Model 451. Change directions in seconds.
Test pressure	From 0 to 20 inches. Maximum pressure at zero flow is 63 inches.
Speed Control, 3 ways	<ol style="list-style-type: none"> <li>1. Speed control knob on fan housing.</li> <li>2. Set fan speed to % in gauge.</li> <li>3. Set % speed on Mobile device for WiFi option.</li> </ol> Set Pressure control will be available I mid-2015 as a free online upgrade.
Results on Color Screen:	<ul style="list-style-type: none"> <li>• Display any desired units that include CFM, CFM/ 100 sq ft</li> <li>• Displays pictures of Ranges and Devices</li> <li>• FanTestic Software Package for automated test and reporting</li> </ul>
Connections	14 feet of 4 inch flexible duct with quick connecting collar.
Size	14 x 14 x 26 inches in carrying case
Weight	35 lb total system including all orifices, gauges, tubing, adapters and flex in a handy, jobsite ready case.
Warranty	2 years on all components except flex duct.



Model 441 Includes DM32 20A, options available include WiFi, reporting software, Custom ISO 17025 Calibration of DM32 and fan on all Ranges. Units are kept in stock for immediate delivery.  
Model 451 adds depressurization kit to the system.

Meets or exceeds all requirements of:  
 NEBB, SMACNA, AABC, NBC, TAB and ASME.  
 Calibrations for pressure are ISO 17025 accredited.  
 Flow calibration conforms to ANSI/AMCA 210 with ISO 17025 optional.

*The DucTester body is 16 lb.*



*Complete system shown with optional 10 – 2.5 inch Adapter for depressurizing making it a Model 451. Optionally orifice plates shown. Yes it all fits into that case.*