

# Getting started with the DM32 WiFi gauge

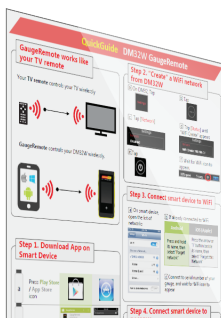
Thank you for purchasing the DM32 WiFi!

First, try out the touchscreen controls of your new gauge on your blower door or DucTester. You will not need any software or WiFi to get even the most advanced results!



## Ready for testing with WiFi?

Flip to WiFi Application Guide on the other half of this page and select an application you would like to try. Use the included QuickGuides for detailed instructions.



## Warranty & online updates

For the full warranty coverage register at [www.retrotec.com](http://www.retrotec.com). The latest software has been already pre-installed to your new DM32 WiFi. Use DM32 Configurator to occasionally check for the latest gauge updates.



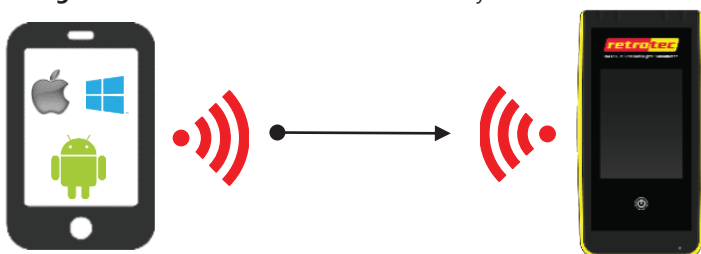
## QuickGuide DM32 WiFi GaugeRemote

### GaugeRemote works like your TV remote

Like a **TV remote** controls a TV wirelessly,



**GaugeRemote** controls a DM32 WiFi wirelessly.



### Step 1. Download App on Smart Device

a

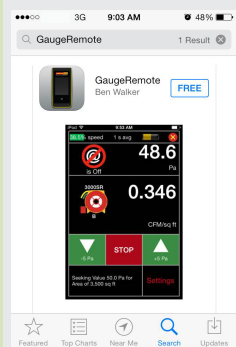
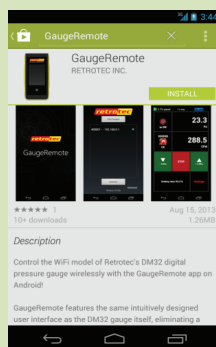
Press **Play Store /**  
**App Store** icon

b

Search for  
"GaugeRemote"

c

Press **"Install"**



INSTALL

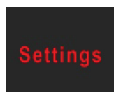
INSTALL

Android

iOS (Apple)

## Step 2. "Create" a WiFi network from the gauge

- a On DM32, tap [Settings]



- c Tap [Network]



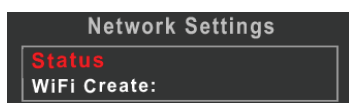
- e Tap



- b Tap



- d Tap [Status] until "WiFi Create" appears

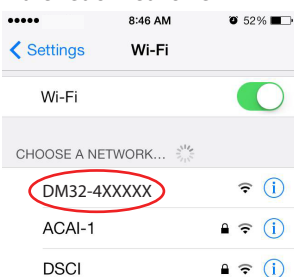


- f Wait for WiFi icon to appear



## Step 3. Connect smart device to WiFi

- a On smart device, open the list of networks



- b If already connected to WiFi

Android	iOS (Apple)
Press and hold its name, then select "Forget network"	Press the arrow or "i" button beside its name, then select "Forget this Network"

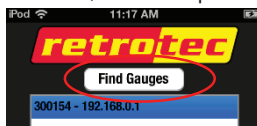
- c Connect to serial number of your gauge, and wait for WiFi icon to appear

## Step 4. Connect smart device to the gauge

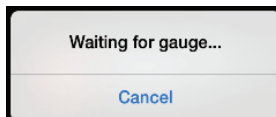
- a On your smart device launch GaugeRemote



- b Press "Find Gauges", select serial number, and then press "Connect"



If you see 'Waiting for gauge...' message then you have poor connection. Try to go closer to your gauge.  
Visit [Retrotec.com/Support](http://Retrotec.com/Support) for more information.



# WiFi Application Guide

